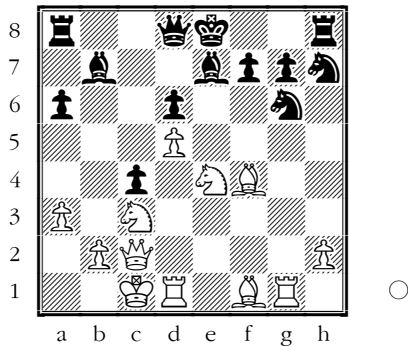


## Test Yourself!

**Djuric (2460) - Martinovic (2448)**  
 SCG First League Vrnjacka Banja SCG  
 (3), 19.10.2005



## World Chess News

### Kramnik's Simul

On November 24 the classical world champion Vladimir Kramnik was giving a simultaneous in the Moscow restaurant Gallery. Kramnik won 23 games and 7 games ended in draws. The event was organised by one of the world's leading watch manufacturers, Blancpain. Kramnik was awarded a unique "Time Zone" watch decorated with his portrait.

[Report in Russian](#)

### Skripchenko vs Deep Blue

We received the following letter from Italy.

"On November 30, in Madonna di Campiglio a mountain village not far from Trento (known because the Emperor Franz Joseph and his wife Sissi had there a winter residence – now it is a hotel) there will be one game (only one game) between Almira Skripchenko and the computer Deep Blue.

It is an event organized inside an international conference about Artificial Intelligence (last year Michele Godena played against Deep Junior and lost). The moves will be sent on the web through the site of the Olympic Games Turin 2006 ([www.chessolympiad-torino2006.org](http://www.chessolympiad-torino2006.org)).

Official web site [www.itc.it](http://www.itc.it)

I made some research and it seems that only one other woman, Judit Polgar, played up to this moment against a computer.

Many thanks for your kind attention and best regards

Adolivio Capece

[www.italiascacchistica.com](http://www.italiascacchistica.com)

Additional information can be found on TWIC:

"Almira will have the white pieces and the game will be conducted under normal time controls. The following day (Dec. 1st) Almira will make a presentation titled "In the mind of the grandmaster" and will conduct a simultaneous exhibition versus a selected group of the conference attendees".

The Chess Base site publishes the third part of [Almira's "Impressions of China"](#)

### Santo Domingo Open

The tournament takes place 24th–30th November. It is a 9 round Swiss. Time control is 90 min + 30 seconds increment. The total prize fund is \$4,900. The first prize is \$1,500.

The top seeded players are GMs Quezada, Zapata, Ermenkov and De La Paz.

[Official website](#)

## Las Palmas Open

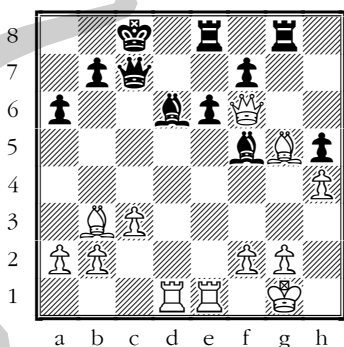
This 9 round Swiss takes is being held 25<sup>th</sup> November – 2<sup>nd</sup> December. The first three prizes are 2,300, 1,700 and 1,400 euros.

The Elo-favourites are GMs Spraggett, Peralta, Kuraica, Narciso, Del Rio Angelis, Vera, Bellon Lopez, IM Krivoshey and GM (WGM) Pia Cramling. [Official website](#)

### Beware: Blunder!

Zivkovic – Pushkov

18th Belgrade Trophy (3), 2005



Black is a pawn down but with normal moves he could have offered some resistance. Instead, he went down immediately.

24...♖g6?? 25.♙xf5!

Black resigned in view of 25.♙xf5 exf5 26.♖xe8+ ♖d7 27.♖e7+ 1-0

Olimp  
Base

### Interview with the OlimpBase editor Wojciech Bartelski

by GM Mikhail Golubev

- CT is continuing its well-established tradition of conducting interviews with chess journalists. Today we are publishing an email interview with Wojciech Bartelski, the man behind an outstanding, but still not widely known online chess project, [www.OlimpBase.org](http://www.OlimpBase.org). At this site already available is a large and detailed Chess Olympiads and World Team Championships statistics database, as well as the news section. (M.G.)



### – Please, tell us something about yourself.

– I'm 28 and I live in Warsaw. As a teenager I used to play club chess. I played for Polonia Warsaw but started too late (aged 13) and had no chance to fight my way through contemporaries who were players like Macieja and Socko, the strong GMs nowadays.

– How did you come up with the concept of OlimpBase?

– The way that led me to build up OlimpBase was quite unusual. A friend of mine, who is member of the Polish-Icelandic Friendship Association and a big fan of Icelandic culture in general asked me to write a few words on Icelandic chess. Then I discovered that much of their amazing chess achievements were Olympic scores. Unfortunately there was no database of those results so I decided to prepare one on my own. The database has grown a bit since then but the paper still hasn't even been started! Seriously, I have always enjoyed international team events. As a young boy I read a lot on chess' history and I found that a lot of interesting events hadn't ever been paid necessary attention. So I decided to fill that gap, but I never dared to dream I would complete full data on all of 36 Olympiads.

– What kind of software are you using for creating the OlimpBase statistics databases?

– The software is self written exclusively for the purposes of the OlimpBase project.

Unfortunately as OlimpBase is growing I must admit my amateur skill Borland Delphi based programme is becoming the bottleneck of the entire project. The files are generated automatically, but are static ones, so, say, a typo inside a player's name means I have to recompile all the events he took part in. As I have no time to learn more sophisticated

This issue is prepared by IM Maxim Notkin; technical editor Graham Brown

Subscription is 15 euro for 3 months. For further details please refer to <http://www.chesstoday.net>

programming techniques I must wait for help from a third party or simply leave it as it is.

**- Are you aiming at making your site commercially profitable?**

- No. OlimpBase costs me an awful lot of time plus some money but money is not a problem here. Every week people spend their time voluntarily contributing to the growth of OlimpBase, so "freely have you received, freely give".

**- Are you working on OlimpBase alone, or maybe you have some assistants?**

- Programming, compiling and design are 100% mine. The data is a team effort of course. According to my coarse estimation no less than 300 people have contributed to what is available today. Though I can't mention all the people, I will mention Mark Commiskey, Kevin Flaherty, Geoffrey Borg or Chrysafis Stamoudis. Thank you all for all.

**- If you don't mind revealing this information, can you provide the approximate number of OlimpBase visitors (per day)?**

- There are about 150-300 unique IPs logged every day. While the competitions are played the number of visitors grows to 400-500 (minor events) or even 1,000 (Olympiads).

**- How do you see the future of the OlimpBase site? Are you planning to expand your coverage on some other types of competitions? European Clubs Cup maybe?**

- The Continental Team Championships will be added in the nearest future (Asian and African data is mostly missing so any help is welcomed!) then we will take up the Women's Olympiads. Let me put out a small request here. Even though I did a lot of research, bulletins from 1969, 1972 and 1982 are still not available. Anyone who owns any of those volumes is cordially asked to get in touch with OlimpBase. ECC will be added next year. Please contact Mr. Claudiu Dobre from Romania (acmilan03c1@yahoo.com) for details

on what had not yet been discovered. If I find time (please note I am not a phantom just a flesh and blood person having wife, child, job and joyful life) I will definitely attempt the task of reconstructing the entire history of Individual WCh cycles including full data on zonal tournaments. As a person fond of marking out virgin paths I often make plans of building a Database of Everything - something that ChessBase have done in an embryonic form. But this is the distant future since it would require decent funding and a team of professionals.

**- How can you evaluate the coverage of the World Team Championship at the official event site?**

- It is very good. I think the design of their page was very professional, also the site was amply informative. However I have seen more user-friendly live coverage scripts in my time.

**- Having so much experience in analysing the world team events, can you suggest any new ideas for their organisers (i.e. FIDE)? Some possible changes of format maybe?**

- I am a fervent fan of the round robin system used at the Olympiads until 1974 and I'm well known for my reluctance towards the Swiss system (you will find extensive discussion at [www.olimbase.org](http://www.olimbase.org)). I believe the format for modern times would be round robin for top 16 (or 14 for those focused on cost cutting) with the bottom two teams relegated, along with 15 (13) round Swiss competitions open for everyone from which the top two teams would qualify to the championship final. I also don't like separate competition for women as if they were intellectually handicapped. I think they should play on equal terms with men or at most be members of mixed teams and play at a women's board.

# Annotated Game

by IM Maxim Notkin

**White: S. Zhigalko (2490)**

**Black: F. Berkes (2596)**

WJun Istanbul TUR (8), 17.11.2005

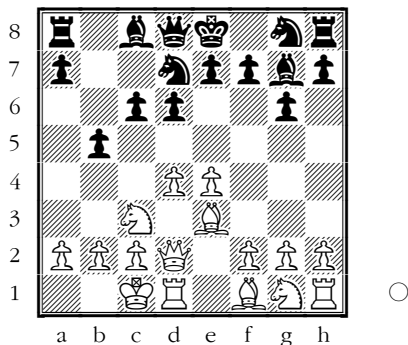
*Robatsch (Modern) defense - [B06]*

Before annotating my next game for CT, I'd like to thank Fred Wilson for his appreciation expressed in CT-1844 and to all our readers who support us. Your positive feedback is very important and encouraging. It's impossible for us to be at the highest level every day but we always try to do our best.

**1.e4 g6 2.d4 ♖g7 3.♗c3 d6 4.♙e3 c6 5.♜d2 b5 6.0-0-0**

White displays his aggressive mood right away. He could opt for a solid line 6.♙d3 ♗d7 7.♗f3 followed by 0-0; 6.f3 is another possible variation where White conceals his real intentions for the time being.

**6...♗d7 (D)**



**7.h4**

The old game Stein - Bronstein, Moscow 1961/URS-ch went 7.♜b1 ♗b6 8.♙d3 a5 9.h4 h5 10.♗h3 b4 11.♗e2 ♗xh3 12.♙xh3 e6 13.f3 ♗f6 14.♙g5 ♜c7 with a complicated position.

**7...♗gf6**

To prevent the advance of the h-pawn by the simple 7...h5 is more reasonable. In Senff - Z.Szabo, Budapest 2000 White didn't obtain an advantage after 8.f3 ♜a5 9.a3 ♙b8 10.♗h3 ♗b6 11.♗f4 ♗a4 12.♗xa4 ♜xa4 13.♜b4 ♗f6; The game Janev - Todorov, Bois Colombes 2003 saw 7...♜a5 8.♜b1 ♗b6 9.♙d3 h5 10.♗h3 ♗f6 11.f3 ♗xh3 12.♙xh3 ♗fd7 13.f4 b4 14.♗e2 c5 15.dxc5 ♗xc5 and here too the position is double-edged.

**8.f3 0-0?!**

Black is playing with fire. Obviously safer is 8...b4 ; or 8...♜a5

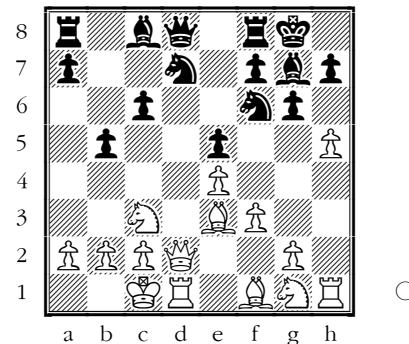
**9.h5!**

Now Black should play vigorously and cautiously at the same time to avoid a quick collapse.

**9...e5**

In case of 9...♗xh5 10.♙h6 Black would most likely be checkmated along the h-file as can happen in the Dragon Sicilian.

**10.dxe5 dxe5 (D)**



**11.g4**

One of White's advantages in this position is the possibility to vary the direction of the attack. For example the typical move 11.♜d6 comes into consideration exploiting the superiority in the centre. Black can continue with 11...♗xh5 (after 11...♙b7 12.g4! with the idea of g4-g5 and the black knights are threatened; 11...b4!?) 12.♜xc6 b4!? (or 12...♙b8 13.♙xb5 ♙b7 hoping to get compensation for material in the form of open files on the queenside.) ; White may also insert 11.hxg6 forcing 11...fxg6 (11...hxg6 12.♙h6+-) and now 12.♜d6 ♙b7 13.♗h3 (to 13.g4 Black has 13...♙f7) 13...♙e8 White's position with the firm centre and the clear objects for attack in the enemy's camp looks very promising.

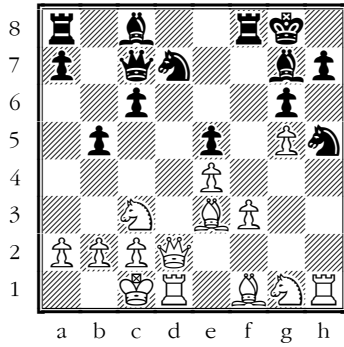
**11...♜c7**

After 11...b4 12.♗a4 ♜a5 13.b3 White is dominating. The possession of the h and d files and the a2-g8 diagonal gives him a huge advantage.

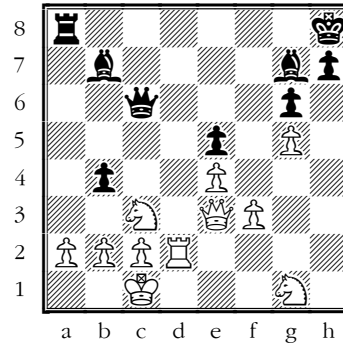
**12.hxg6 fxg6**

Again bad is 12...hxg6? 13.♙h6 The text move allows a tactical blow but the game is not over.

**13.g5 ♗h5 (D)**



"White underestimated the *power* of the sleepy black bishops"



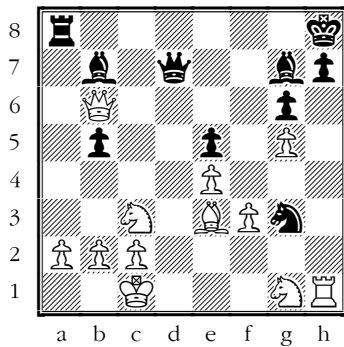
#### 14. Qxb5!

This capture is stronger than 14. Qxb5 cxb5 15. Qd5+ Qh8 16. Qxa8 Qb6 (in the interesting line 16... Qb7 17. Qxa7 Qa8 18. Qxb5! Qxa7 19. Qxd7 Qa5 20. Qxa7 Qf8! Black takes back one piece with a sharp position) 17. Qxb6 Qxb6 18. Qd5 (or else Qb7) 18... Qg3 19. Qg2 Qxh1 20. Qxh1 The white minor pieces are misplaced which gives Black sufficient compensation for a pawn.

#### 14... cxb5 15. Qd5+ Qh8 16. Qxa8 Qb7 17. Qxa7 Qa8 18. Qxd7

The in-between capture 18. Qxb5 results in a pawn exchange after 18... Qc6 19. Qxd7 Qxd7 20. Qb6 Qxa2 and Black's activity is menacing; The continuation 18. Qd5 Qc6 19. Qe7 Qc7 20. Qd5 suddenly leads to a draw.

#### 18... Qxd7 19. Qb6 Qg3 (D)



#### 20. Qh2?

The least felicitous square for the rook. Better was 20. Qh4 Qc6 (20... Qf1 21. Qxg6 Qf8 22. Qf2! and the check on d2 is just a fatal waste of time) 21. a3 and Black's compensation is yet to be proved. White underestimated the power of the sleepy black bishops.

#### 20... Qf1! 21. Qe2 Qxe3 22. Qxe3 b4 23. Qd2 Qc6?! (D)

Black should have kept control of the back rank by 23... Qc7 and if 24. Qd5 Qxa2!

#### 24. Qb1?

Too passive. In the event of 24. Qc2 Black can't take on a2 and his task would have become more difficult e.g. 24... Qe6 (24... Qa6 25. Qb3 attacking the Qb4 and planning Qd5) 25. Qc5!? (in the ending after 25. Qb3 Qxb3 26. cxb3 h5! 27. Qd7 Qa6 28. a4 bxa3 29. bxa3 Qf8 30. a4 h4 Black has counterplay thanks to the remote passed pawn; 25. b3 is worth trying where 25... Qa6 is met by 26. Qc5!) 25... b3!? (25... Qxa2 26. Qd7 Qa6 27. Qxb4 favours White) 26. a3! Qc8 27. Qb4 Qf7 followed by h7-h5 at some point.

24... Qf8! The dark-squared bishop returns to life.

#### 25. Qd5

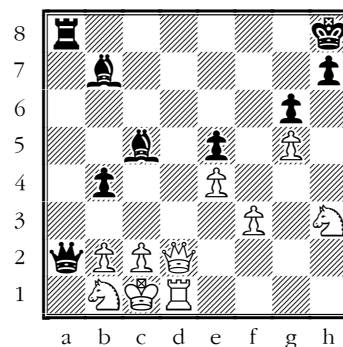
If 25. Qb3 Qe7 26. Qg2 Qc8 and Black's pieces are nicely rearranged.

#### 25... Qc4 26. Qd1?!

One more passive retreat. After 26. Qd3 White could hold as in various lines the rook and the queen launch an invasion through the d-file - 26... Qc5 27. Qd2! and if 27... Qxg1 28. Qd8+ Qxd8 29. Qxd8+ Qg7 30. Qf6+ Qg8 with perpetual

26... Qc5 27. Qd2 With the queen in front of the rook it doesn't work.

#### 27... Qxa2 28. Qh3 (D)



28. ♖e2 ♖a7! and Black wins.

**28... ♖d4**

Maybe tougher was 28... ♖f8!

**29.c3?**

Missing the last chance - 29. ♖xb4! ♖e3+ 30. ♖d2 Giving up the exchange White would have obtained an opportunity to consolidate the position by bringing the knights back into play. The opening of the files on the queenside ruins his game in a few moves.

**29... bxc3 30. bxc3**

30. ♖xc3 ♖b3 31. ♖c2 ♖a1+ 32. ♖d2 (32. ♖b1 ♖e3+ 33. ♖d2 ♖b4+) 32... ♖xc3+ 33. bxc3 ♖a2+

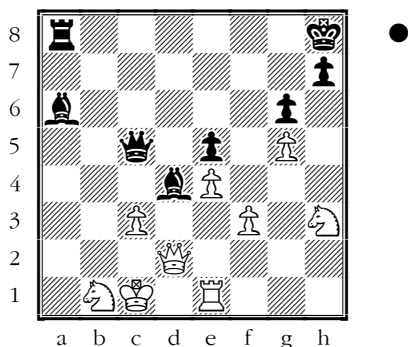
**30... ♖c4**

30... ♖b3! 31. ♖b2 ♖e3+ 32. ♖d2 ♖c4+

**31. ♖d3 ♖c5 32. ♖e1 ♖a6**

The light-squared bishop contributes its mite.

**33. ♖d2 (D)**

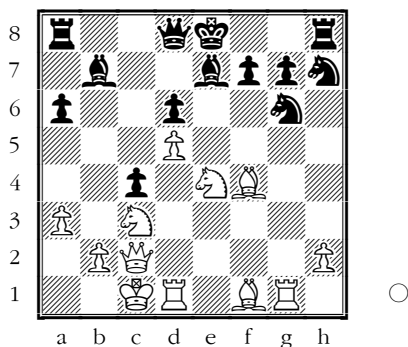


**33... ♖b8! 34. ♖f4 ♖b6! 35. ♖a3 ♖c5 0-1**

**Solution to our quiz:**

**S. Djuric (2460) - Sl. Martinovic (2448)**

SCG First League m Vrnjacka Banja  
SCG (3), 19.10.2005



**20. ♖xg6! fxg6 21. ♖xd6+!**

21. ♖xd6+ ♖xd6 22. ♖xg6+ ♖e7 (22... ♖f8 23. ♖xd6+ ♖g8 24. ♖e6#;

22... ♖d7 23. ♖xd6+ ♖c8 24. ♖h3+) 23. ♖xg7+ ♖e8 24. ♖g6+ ♖e7 25. ♖e6+ ♖f8 26. ♖h6#

**1-0**

**Contact information.** Have some comments about Chess Today? [E-mail us](mailto:ababurin@iol.ie) - we appreciate your feedback! **Chess Today** is published by Alexander Baburin, 3 Eagle Hill, Blackrock, Co. Dublin, Ireland. Tel: (353-1) 278-2276. Fax: (353-1) 283-6839. E-mail: [ababurin@iol.ie](mailto:ababurin@iol.ie) Website: <http://www.chesstoday.net> Editors: GMs Baburin, Scherbakov and Golubev; IMs Barsky, Notkin and Vlassov. Technical editors: Graham Brown and Ralph Marconi.

**Chess Today** is copyright 2000-2005 by Alexander Baburin and protected intellectual property under the International Copyright convention. Subscribers are allowed to non-commercially distribute copies of Chess Today at their chess club, chess tournaments and via e-mail (on an occasional basis). Any other use and distribution (reproduction, via print, electronic format, or in any form whatsoever), as well as posting on the Web, is strictly prohibited without express written permission.